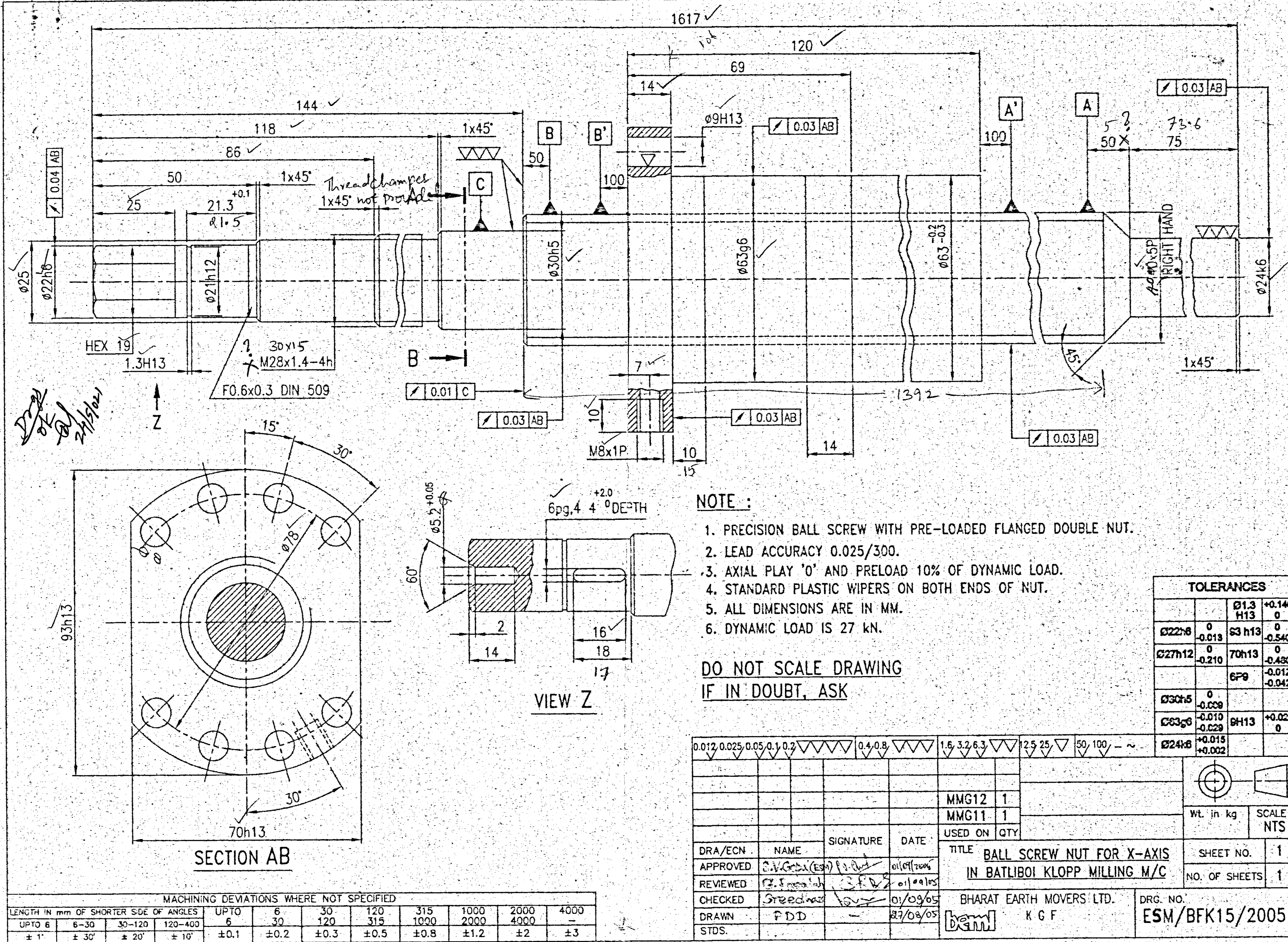


COPY RIGHT & CONFIDENTIAL
This document is the exclusive property of BEML and contains confidential information. This document or its contents shall not be used, reproduced or disclosed in whole or in part, without prior written permission from BEML. This document and all its copies shall be returned to BEML on demand.

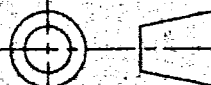


NOTE :

- 1. PRECISION BALL SCREW WITH PRE-LOADED FLANGED DOUBLE NUT.
- 2. LEAD ACCURACY 0.025/300.
- 3. AXIAL PLAY '0' AND PRELOAD 10% OF DYNAMIC LOAD.
- 4. STANDARD PLASTIC WIPERS ON BOTH ENDS OF NUT.
- 5. ALL DIMENSIONS ARE IN MM.
- 6. DYNAMIC LOAD IS 27 KN.

DO NOT SCALE DRAWING
IF IN DOUBT, ASK

TOLERANCES			
		Ø13 H13	+0.140 0
Ø22h8	0 -0.013	63 h13	0 -0.540
Ø27h12	0 -0.210	70h13	0 -0.430
		67g9	-0.012 -0.042
Ø30h5	0 -0.009		
Ø63g6	-0.010 -0.029	ØH13	+0.022 0
Ø24h6	+0.015 +0.002		

0.012 0.025 0.05 0.1 0.2				0.4 0.8				1.6 3.2 6.3				2.5 25		50 100 - ~		Ø24±0.015 +0.002					
																					
								MMG12				1									
								MMG11				1									
								USED ON				QTY									
DRA/ECN		NAME		SIGNATURE				DATE				TITLE BALL SCREW NUT FOR X-AXIS IN BATLIBOI KLOPP MILLING M/C						SHEET NO.		1	
APPROVED		G. V. Gopal (ESM)		[Signature]				01/09/2005										NO. OF SHEETS		1	
REVIEWED		G. V. Gopal		[Signature]				01/09/05													
CHECKED		Shreedhar		[Signature]				01/09/05				BHARAT EARTH MOVERS LTD.						DRG. NO.		ESM/BFK15/2005	
DRAWN		PDD		[Signature]				27/08/05				K G F									
STD.												[Logo]									

MACHINING DEVIATIONS WHERE NOT SPECIFIED									
LENGTH IN mm OF SHORTER SIDE OF ANGLES		UPTO 6	6-30	30-120	120-400	UPTO 6	6-30	30-120	120-400
± 1°		± 0.1	± 0.2	± 0.3	± 0.5	± 0.1	± 0.2	± 0.3	± 0.5